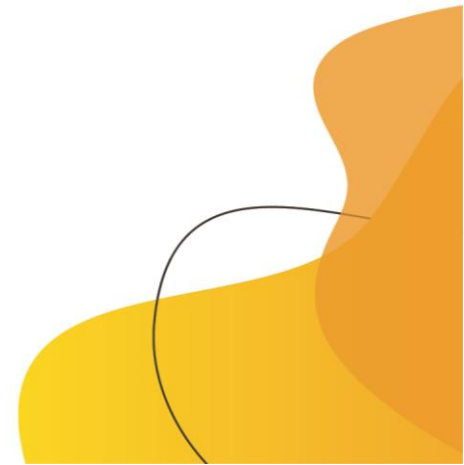




**Careers and Enterprise Plan
West Bromwich Collegiate Academy
2023-24**

***“Careers should be transformational to the lives of young people.
At West Bromwich Collegiate Academy careers will provide a platform for motivation,
for students to aim higher, achieve more and reach their aspirations.”***

The information in this document provides an outline of the school’s taught provision and an overview of the opportunities that students at West Bromwich Collegiate Academy will receive.





Gatsby 8 Benchmarks for Careers Excellence
1. A stable careers programme
2. Learning from career and labour market information
3. Addressing the needs of each pupil
4. Linking curriculum learning to careers
5. Encounters with employers and employees
6. Experiences of workplaces
7. Encounters with further and higher education
8. Personal guidance

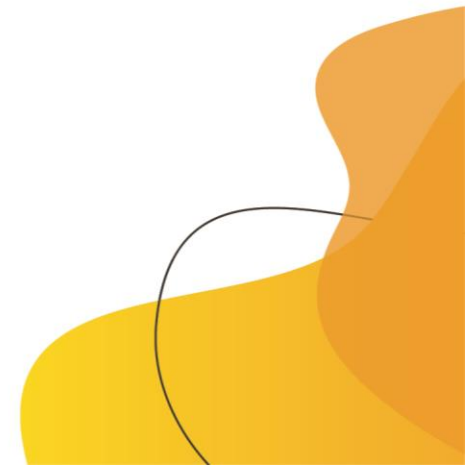
Whole School Strategies

Activity	Details	Impact	Gatsby Benchmark
Displays	Careers based displays are presented in all areas of the Academy promoting subject specific options.	Encourages students to begin to think about their future and careers, this also increases an awareness of career priorities to staff and students.	2, 4
National Careers Week	This week is celebrated in the Academy by: <ul style="list-style-type: none"> • Highlighting careers to students through subject departments. • Careers hub activities. • Guest speakers for aspiring careers. 	This week celebrates the opportunities for young people aspiring to different careers. It provides an opportunity for external partners to engage with school.	1, 2, 4, 5, 7
Student Council	The academy holds regular sessions with the student council. Students are surveyed via Microsoft Forms to establish career pathways, trends, and changes.	This information helps to plan the strategic development of the careers department including analysing students'	1, 3





		needs and wants to ensure they gain the best experiences available to them.	
Parental Engagement	Engagement takes place via a careers newsletter, meetings, school website.	Increased parental awareness of careers support in making decisions about options, future destinations, and opportunities in the academy.	3, 8
Careers Champions	Subject specific staff have received additional careers training to support the development of careers within departmental areas.	Awareness of good careers practice has grown among the staff body and students are able to discuss subject specific careers with individual members of staff.	2, 4, 8
Focus Days	Every year group will experience the opportunity to develop careers and enterprise skills working in collaboration with external speakers and partners.	Students are afforded the opportunity to work closely with business, partners, and external agencies to develop skills and learn about the wider aspect of careers.	1, 4, 5
Hub Site	Every year group will have access to the Hub Site which will provide them with guidance and information.	Students are provided access to careers guidance and information, access CV templates and application letters. Students can apply for opportunities advertised by partners outside of the school usual provision.	1, 2, 3, 8



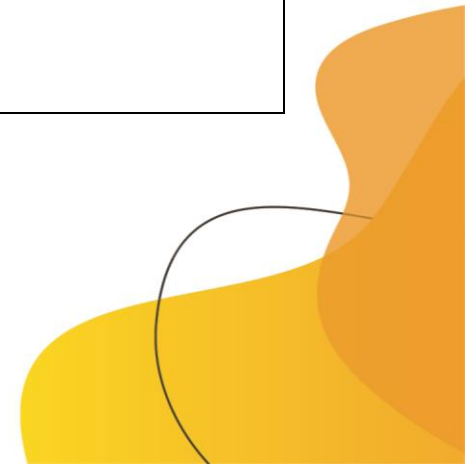


Year 7

Activity	Impact	Gatsby Benchmark
Assembly	Students will have the opportunity to listen to guest speakers from different career backgrounds. This broadens students contact with a range of employers.	3, 6
Careers Lessons	Students will explore careers, employability, and enterprise education. They will learn about the world of work and identify career management skills.	1, 2, 3, 4
Focus Day	Enterprise days – Year groups work with a company and are set a challenge. Students then work in groups to do complete the challenge and present back at the end. Learning about personal skills and traits, online reputation, thinking outside the box and expanding career pools.	1, 3, 5, 6

Year 8

Activity	Impact	Gatsby Benchmark
Assembly	Students will have the opportunity to listen to guest speakers from different career backgrounds. This broadens students contact with a range of employers.	3, 6
Careers Lessons	Students will develop careers, employability, and enterprise education. They will learn about the world of work developing their understanding of the workplace and explore further career management skills.	1, 2, 3, 4
Focus Day	Enterprise days – Year groups work with a company and are set a challenge. Students then work in groups to do complete the challenge and present back at the end. Learning about personal skills and traits, online reputation, thinking outside the box and expanding career pools.	1, 3, 5, 6





Year 9

Activity	Impact	Gatsby Benchmark
Assembly	Students will have the opportunity to listen to guest speakers from different career backgrounds. This broadens students contact with a range of employers.	3, 6
Careers Lessons	Students will evaluate careers and employability opportunities. They will evaluate options from the world of work developing their understanding of the workplace. They will progress through a series of skills lessons to help them choose the most suitable GCSE options.	1, 2, 3
Focus Day	Enterprise days – Year groups work with a company and are set a challenge. Students then work in groups to do complete the challenge and present back at the end. Learning about personal skills and traits, online reputation, thinking outside the box and expanding career pools.	1, 2, 4, 5, 6
Independent Careers Advice	All Year 9 students are provided with a 1:1 impartial career advice session. The session provides increased aspirations and opportunity to discuss options.	1, 2, 3, 8
Women in Engineering	STEM for girls, the day involves students engaging in the engineering medical and space sector through a series of lectures.	5, 6





Year 10

Activity	Impact	Gatsby Benchmark
Assembly	Students will have the opportunity to listen to guest speakers from different career backgrounds. This broadens students contact with a range of employers.	3, 6
Focus Day	Enterprise days – Year groups work with a company and are set a challenge. Students then work in groups to do complete the challenge and present back at the end. Learning about personal skills and traits, online reputation, thinking outside the box and expanding career pools.	2, 3, 4, 5, 7
Work Experience	Students will gain a range of transferable skills and experience a type of career.	5, 6
Careers Education within Personal Development	A careers and employability skills scheme of work which develops an awareness of career opportunities, interview skills, application writing skills and building a CV.	2, 3, 4, 5





Year 11

Activity	Date	Impact	Gatsby Benchmark
Careers Education within Personal Development	Autumn Term	A careers and employability skills scheme of work which develops an awareness of career opportunities, interview skills, application writing skills and building a CV.	2, 3, 4, 5
Focus Day	October	Year 11 destinations day. Careers fair with many providers e.g sixth forms, colleges, T Level providers.	2, 3, 5, 7
Assembly	Throughout the year	Students will have the opportunity to listen to guest speakers from different career backgrounds. This broadens students contact with a range of employers.	3, 6
Independent careers advice	Throughout the year	All Year 11 students are provided with a 1:1 impartial career advice session. The session provides increased aspirations and opportunity to discuss options.	1, 2, 3, 8
Sixth Form Open Evening	Autumn Term	Students and parents can access high quality information relating to Sixth Form study at Shireland including subject specific talks and LMI.	3, 4, 7
Careers Toolkit	Spring Term	A careers and employability skills scheme of work which develops an awareness of career opportunities, interview skills, application writing skills and building a CV.	2, 3, 4, 5

